

## Procedure to configure Mac OS X to support Universities via Y5ZONE

1. Click **Wi-Fi** icon at top right corner of the screen. Select **Turn Wi-Fi On**.



2. Select **Universities via Y5ZONE**.



3. In the Enter Credentials window, enter your username and password. Click **Join**. A. For Student

Username: **Student Number** in the format of **StudentNumber@hkuspace-plk.hku.hk**

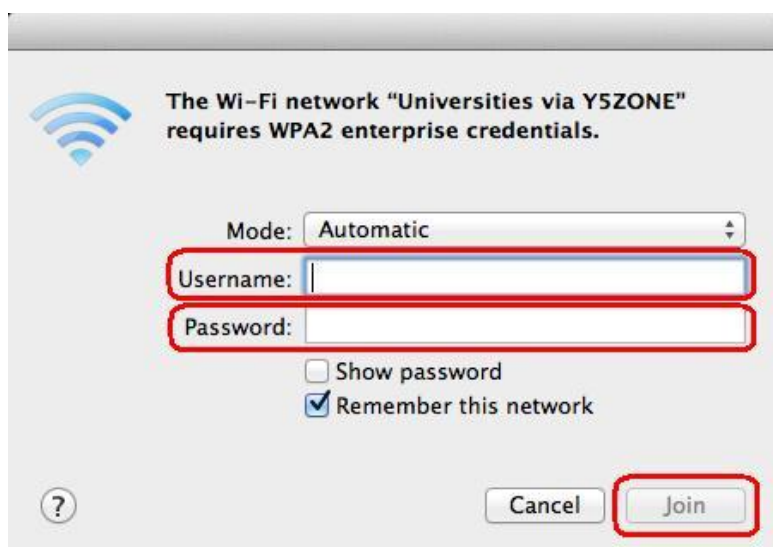
Password: Login password of **cyberstation**

*For first time student WiFi user, please login the CyberStation in HPC campus and change password.*

- B. For Staff

Username: **Login ID of staff PC** in the format of **LoginIDofStaffPC@hkuspace-plk.hku.hk**

Password: **Staff Intranet Password**

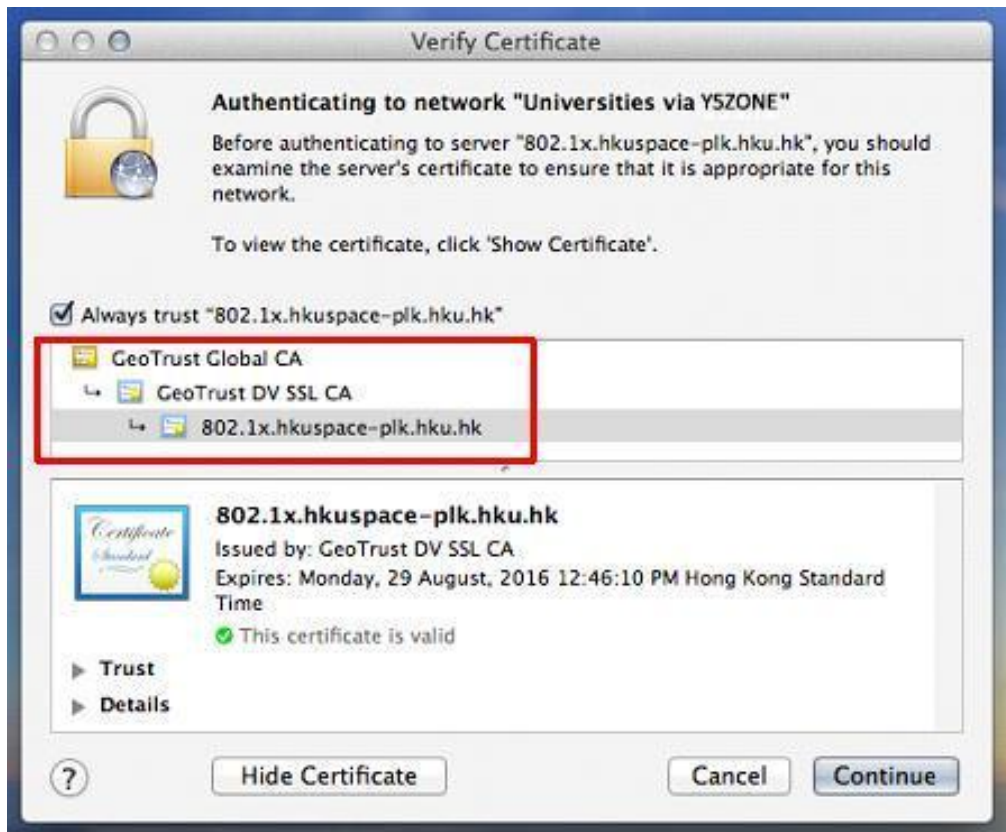


The screenshot shows a window titled "The Wi-Fi network 'Universities via Y5ZONE' requires WPA2 enterprise credentials." It features a Wi-Fi icon and a "Mode" dropdown menu set to "Automatic". Below this are two input fields: "Username:" and "Password:", both highlighted with red boxes. There are two checkboxes: "Show password" (unchecked) and "Remember this network" (checked). At the bottom, there are "Cancel" and "Join" buttons, with the "Join" button also highlighted with a red box.

4. When Verify Certificate pops up, Click **Show Certificate**.



5. Make sure the certificate is 802.1x.hkustspace-plk.hku.hk, signed by GeoTrust SSL CA. Click **Continue**.



6. Enter your local machine username and password. Click Update Settings.



7. Open the Internet browser, go to <http://www.google.com>.

END