

Procedure to configure Apple iPad to support Universities via CSL

1. Turn on your iPad and navigate to the home screen. Locate and Tap the **Settings** icon.



2. Tap the Wi-Fi button.



3. While you are at CSL Hotspot, ensure that WiFi is turned ON and tap "Universities via CSL".



4. Enter your username and password.

A. For Student

Username: **HPSHCC Student ID** in the format of **HPSHCCStudentID@hkuspace-plk.hku.hk**

Password: Login password of CyberStation.

For first time student WiFi user please login the Cyberstation in HPSHCC campus and change password

B. For Staff

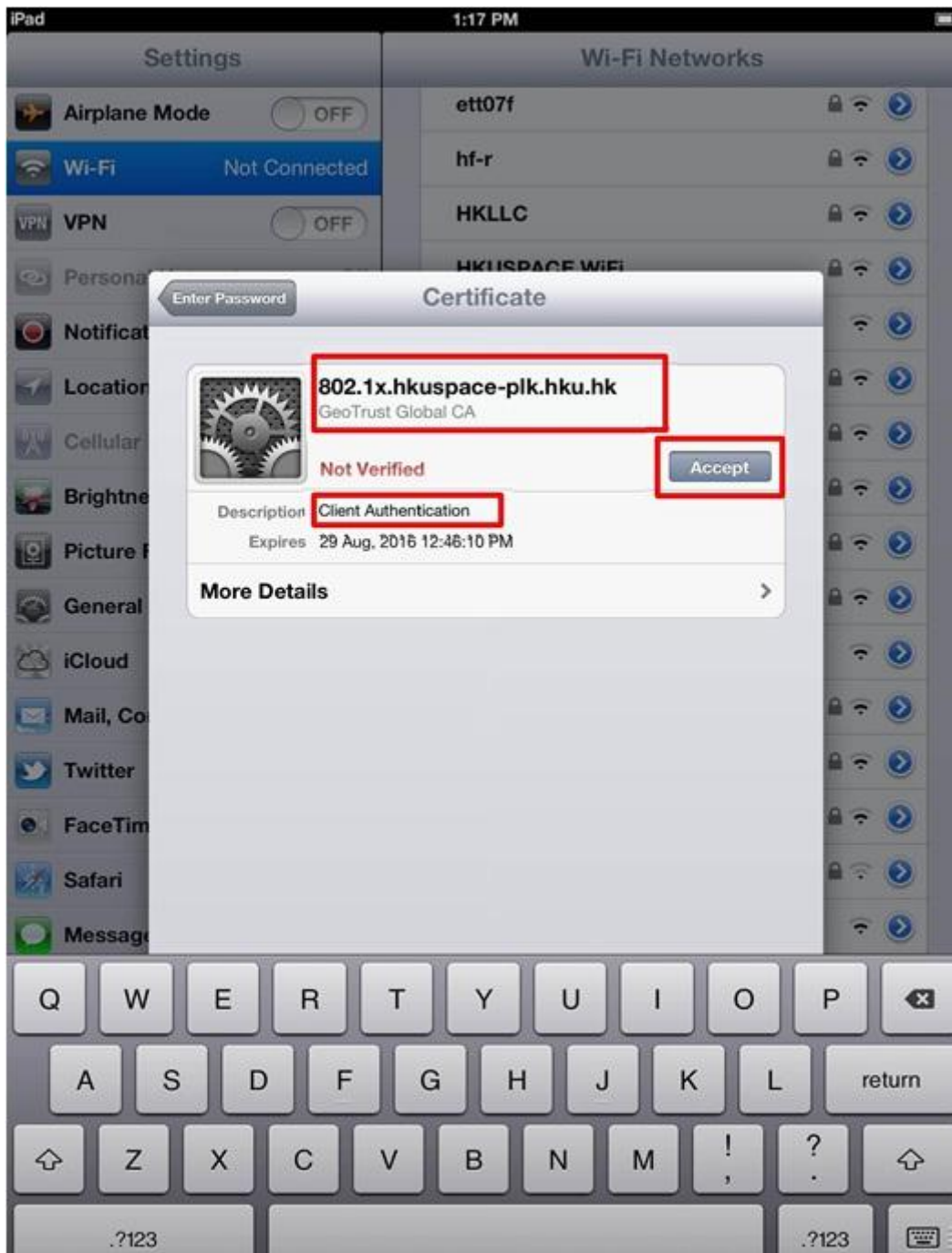
Username: **Login ID of staff PC** in the format of **LoginIDofStaffPC@hkuspace-plk.hku.hk**

Password: Login password of CyberStation.



5. Tap Join

6. You will be asked to accept the certificate, **802.1x.hkospace-plk.hku.hk** signed by **GeoTrust Global CA** the first time you connect. Click **Accept** to accept the **Client Authentication**.



7. You should now see "**Universities via CSL**" as your selected network.



8. Open the Internet browser, go to <http://www.google.com>. Then, read and agree the pop-up CSL WiFi Terms & Conditions.

END