



WiFi Printing Services at HKU SPACE Po Leung Kuk Stanley Ho Community College (HPSHCC) 4/F ; 5/F ; 6/F; 10/F & 14/F

Procedures for the installation of printing driver:

1. Login wireless network SSID named “HPSHCC WiFi” with your Username and password.
2. Browsing HPSHCC website <http://hkuspace-plk.hku.hk>
3. Select “**FAQ**”
4. Select “**HPSHCC WiFi Printing Services**”
5. Select the preferred printing driver to download depended on the operating system of your notebooks.
6. Download the printing driver and then follow the wizard to finish the installation.

Model of Photocopiers, Photocopiers Location and Printing Driver supported OS

Location	MS Windows Vista / MS Windows 7 / MS Windows 8 (64bit) x64 Driver	MS Windows Vista / MS Windows 7 / MS Windows 8 (64bit) x64 Driver
HPSHCC 4/F	Yes	Yes
HPSHCC 5/F	Yes	Yes
HPSHCC 6/F	Yes	Yes
HPSHCC 10/F	Yes	Yes
HPSHCC 14/F	Yes	Yes

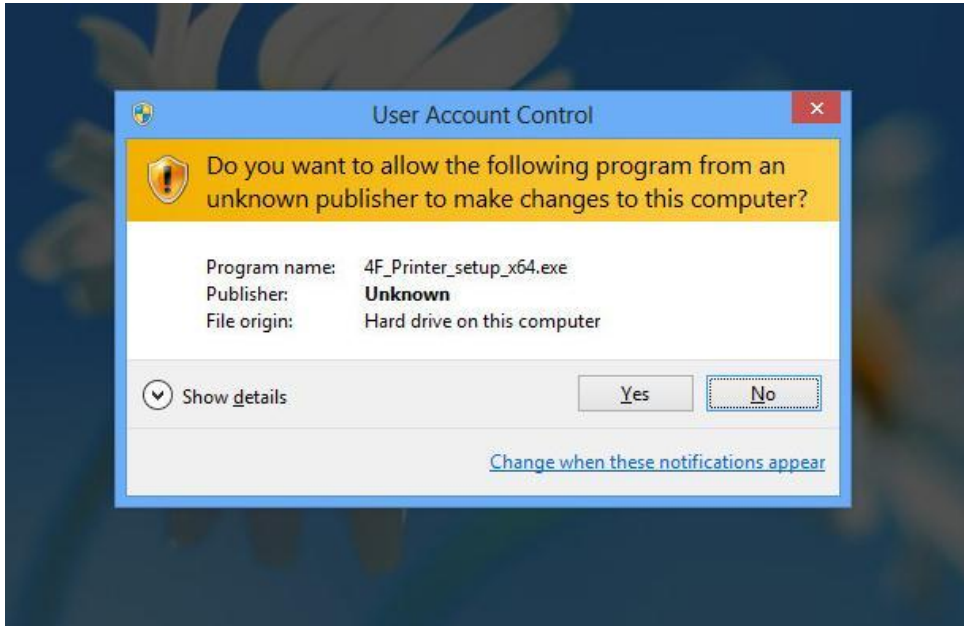
Disclaimer: HPSHCC assumes no responsibility for any damage to your computer system that may be caused by the installation of the printing drivers.

Friendly reminder:

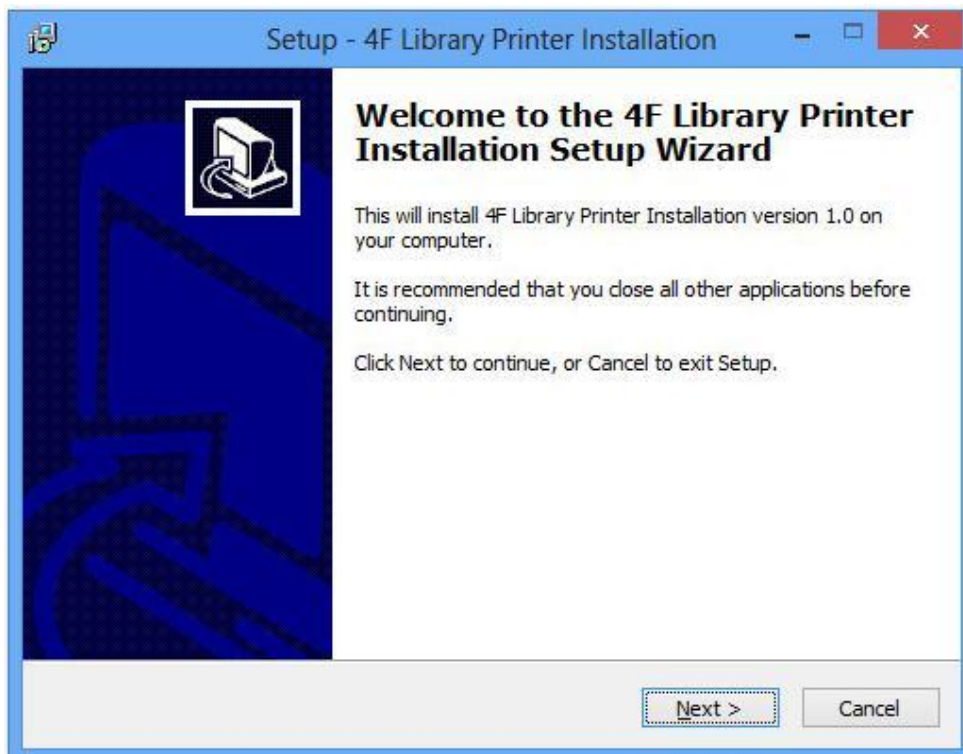
- (1) Administrator user right is required for the driver installation.
- (2) The printing services supported "**HPSHCC WiFi**" wireless networks in HPSHCC campus only.
- (3) The new add printer will not be installed as the default printer.

The installation of printing drivers for WiFi printing services

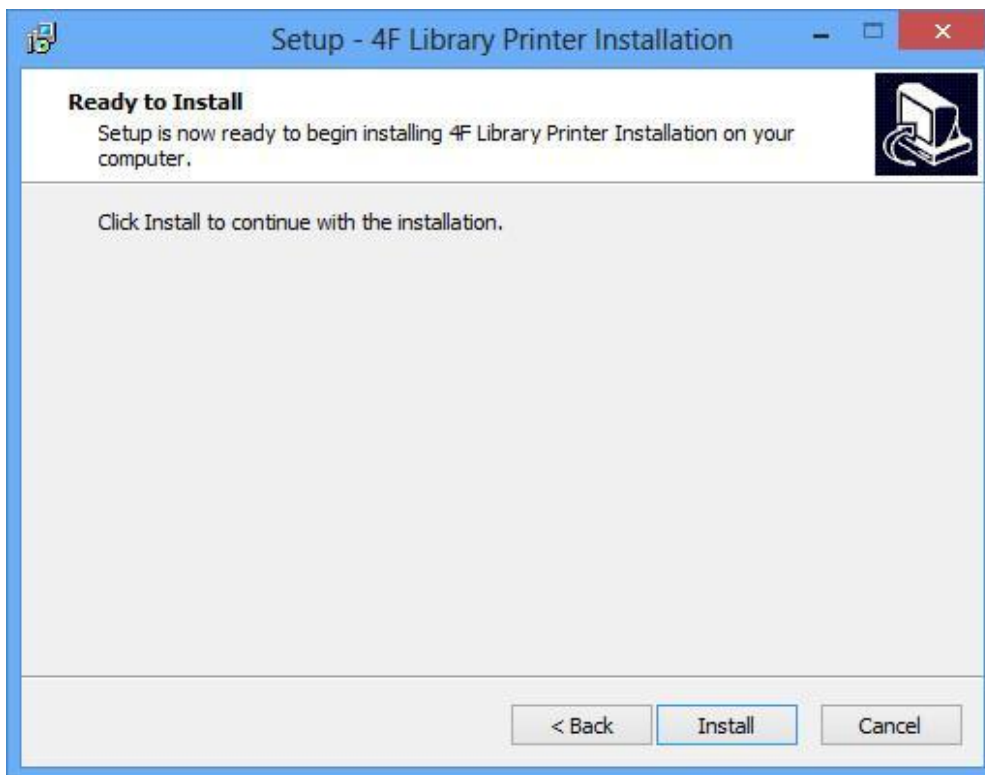
1. You may get the alert message by **User Account Control(UAC)** as the following when you double click the installation file to start the installation. Please just click “**Yes**” to start the installation.



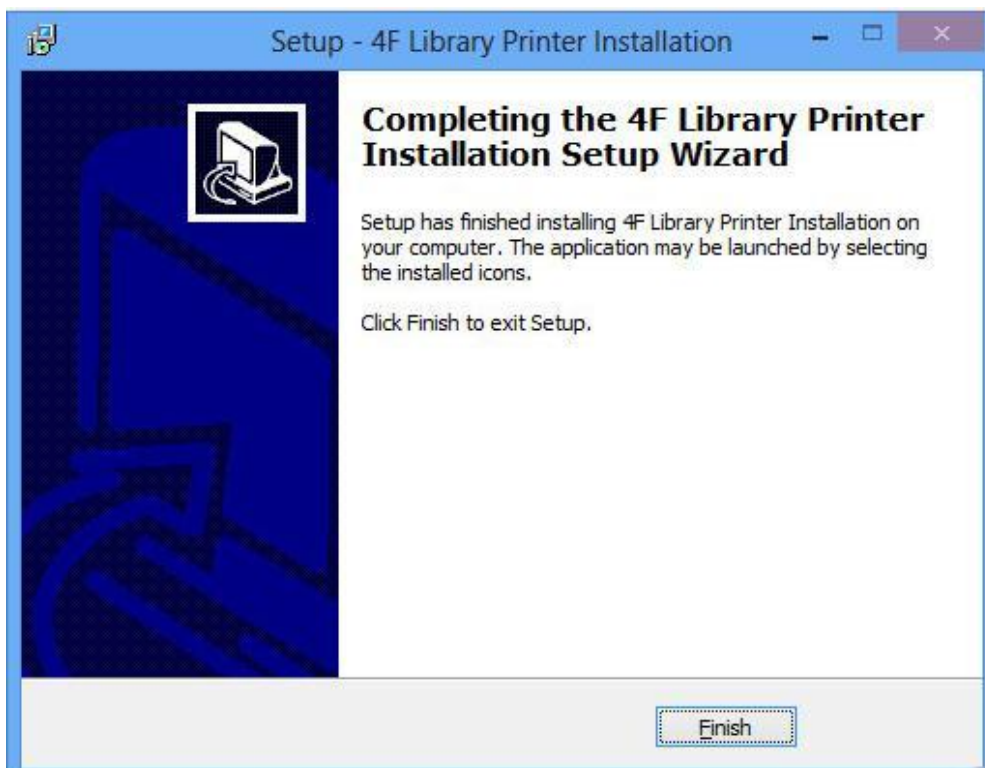
2. Please click “**Next**” to continue the installation.



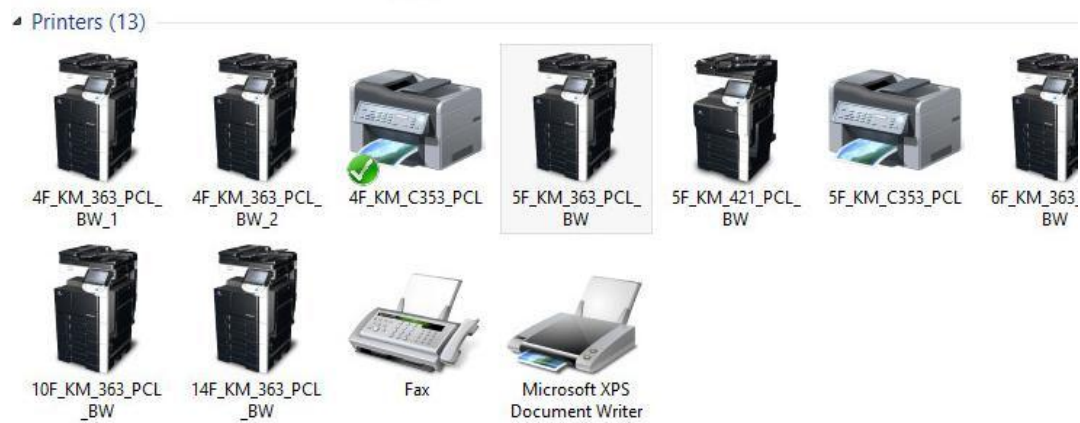
- Please click **“Install”** to install printing driver.



- Please click **“Finish”** to finish the installation.



5. The new add printer will not be installed as the default printer.



Last revised at: 2 April 2015

- END OF DOCUMENT -