

Installation and configuration Guide of Printing Services for Notebook

1. Search the model in [download page](#) and download PCL6 driver, if available

模擬	發佈日期	版本	描述	下載
PostScript	2018-07-26	11.1.1.0	更多 +	下載 ↓
PC-Fax	2018-07-26	11.1.1.0	更多 +	下載 ↓
PCL6	2018-07-26	11.1.2.0	更多 +	下載 ↓
PostScript	2017-12-01	10.1.1.0	更多 +	下載 ↓

2. Check the term and condition and click zip file to download

接受許可協議

文件夾

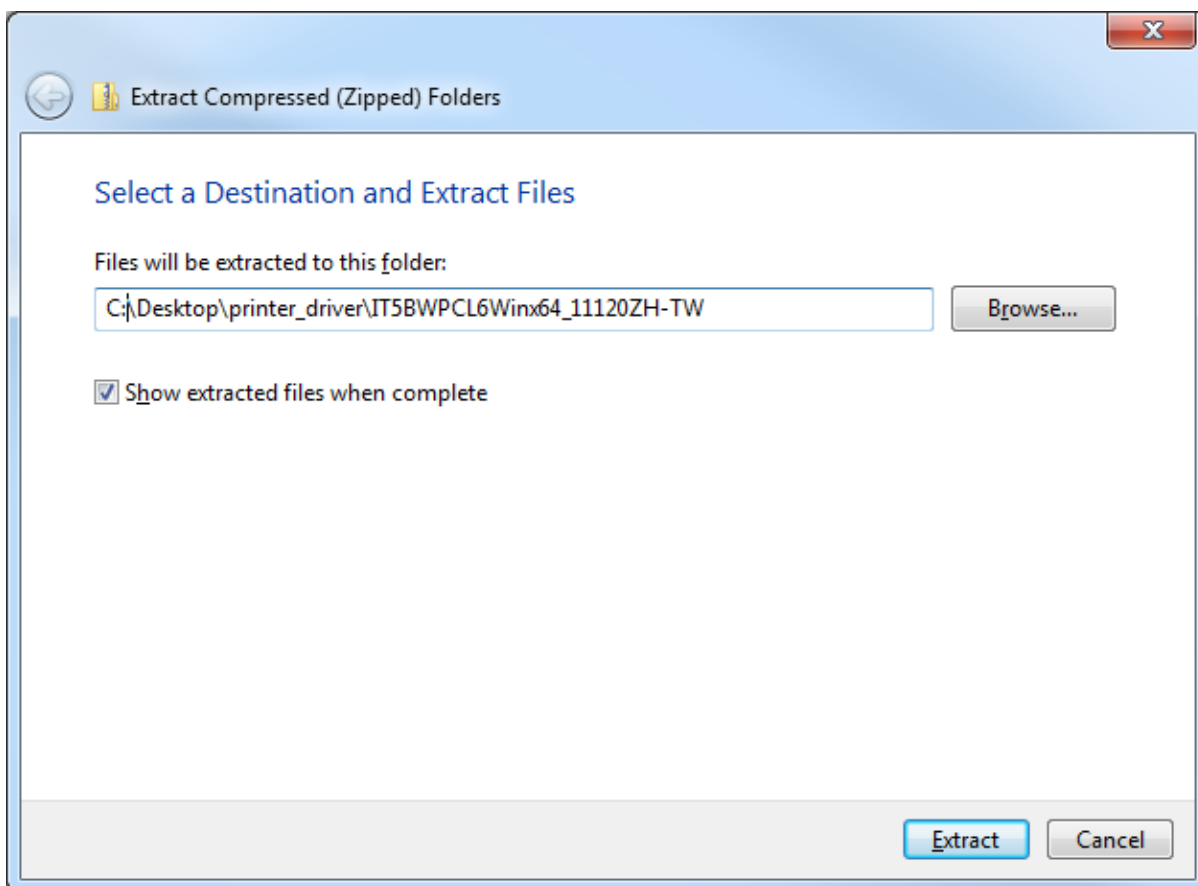
IT5BWPCl6Winx64_11120ZH-TW.zip (12600 KB)

IT5BWPCl6Winx64_11120ZH-TW.TXT (57 KB)

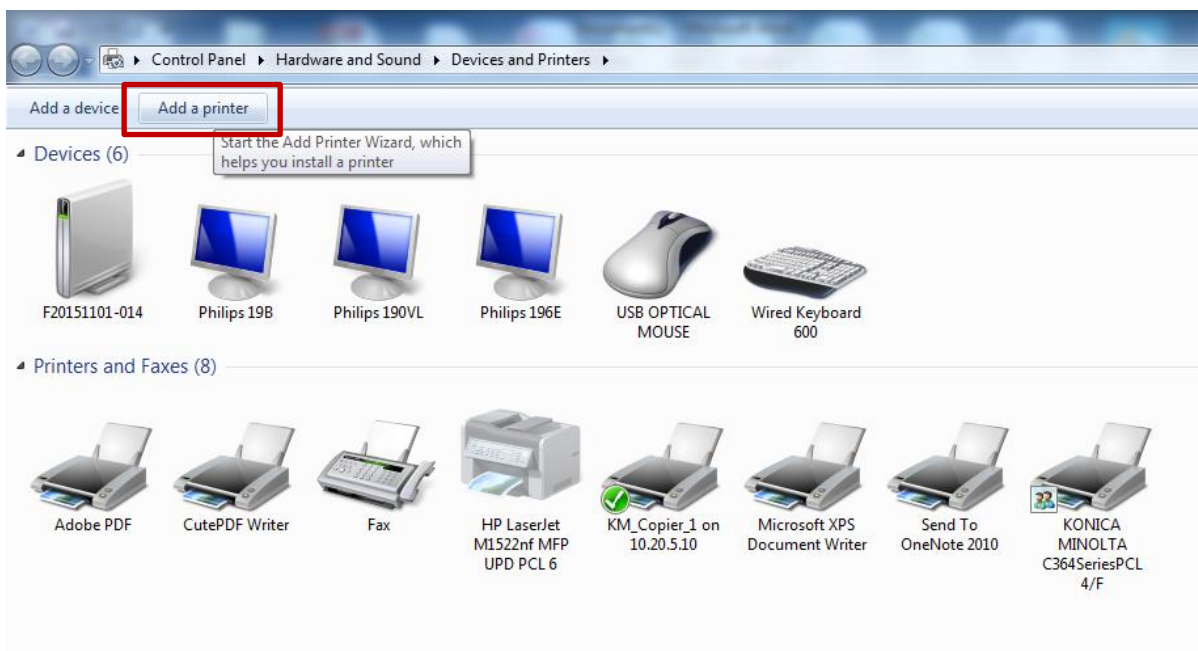
由於設備固件和已安裝的應用軟件相結合，有一些軟件功能可能無法正常執行。如欲了解更多資訊，請聯絡你的本地授權經銷商。

× 關閉

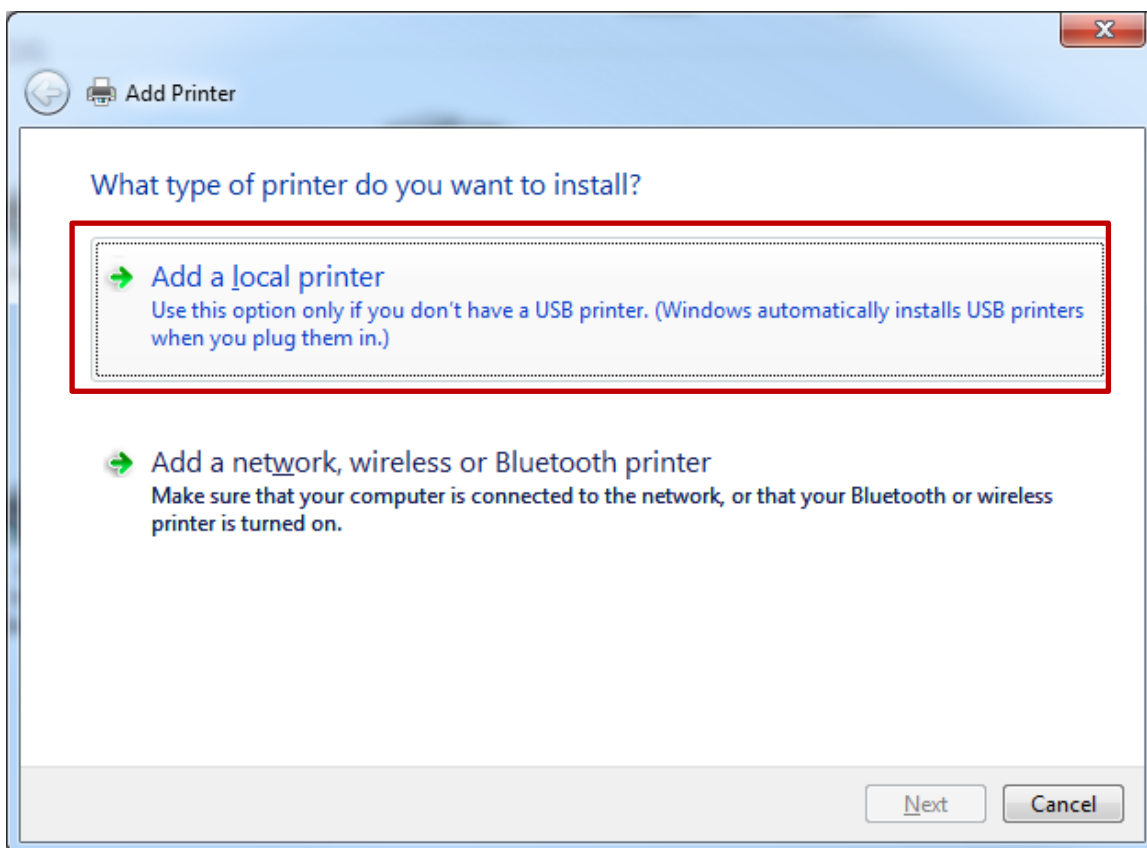
3. Unzip the downloaded file



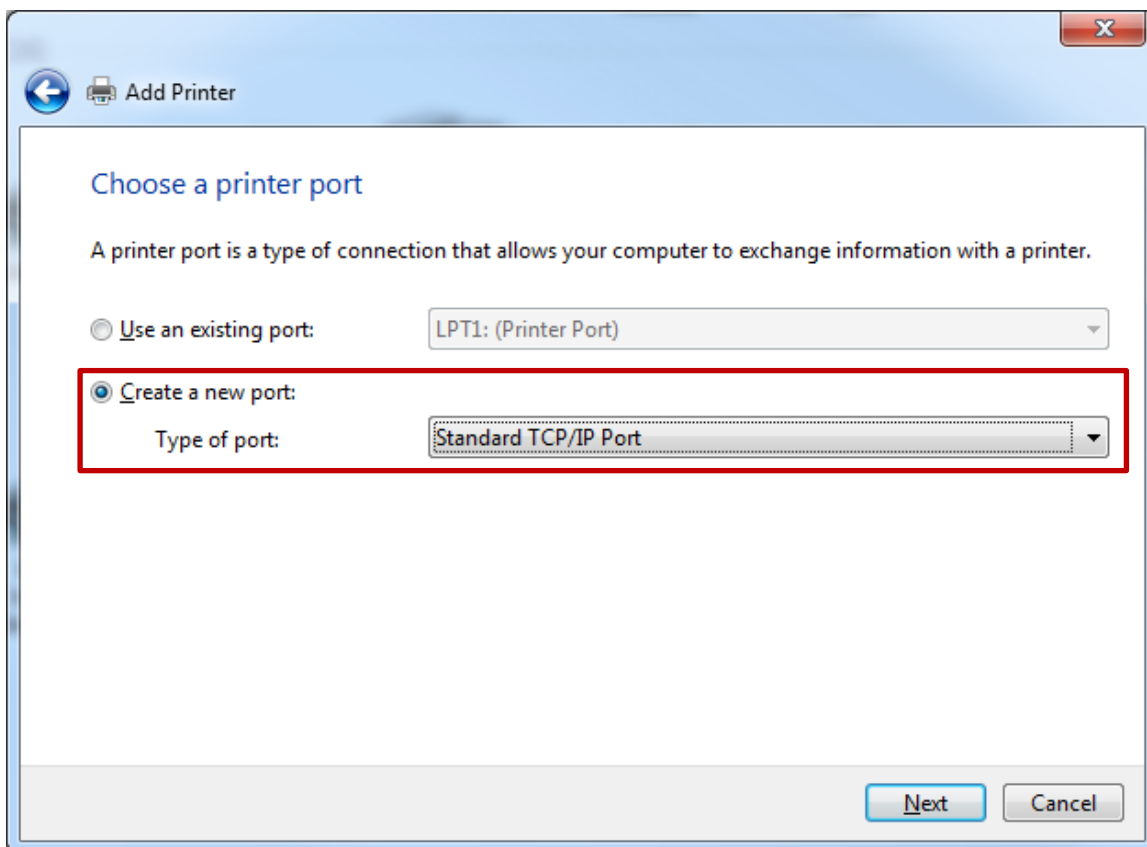
4. Go to Control Panel -> Hardware and Sound -> Devices and Printers and click "Add a printer"



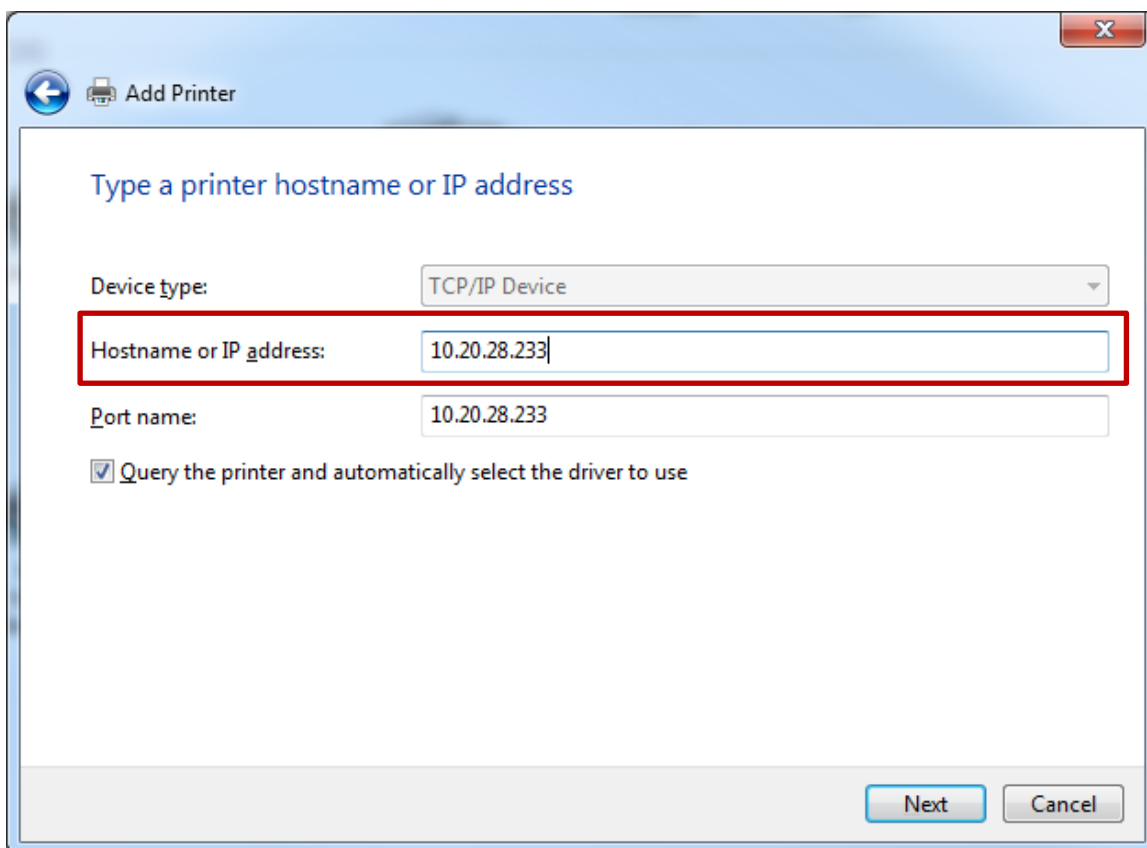
5. Click "Add a local printer"



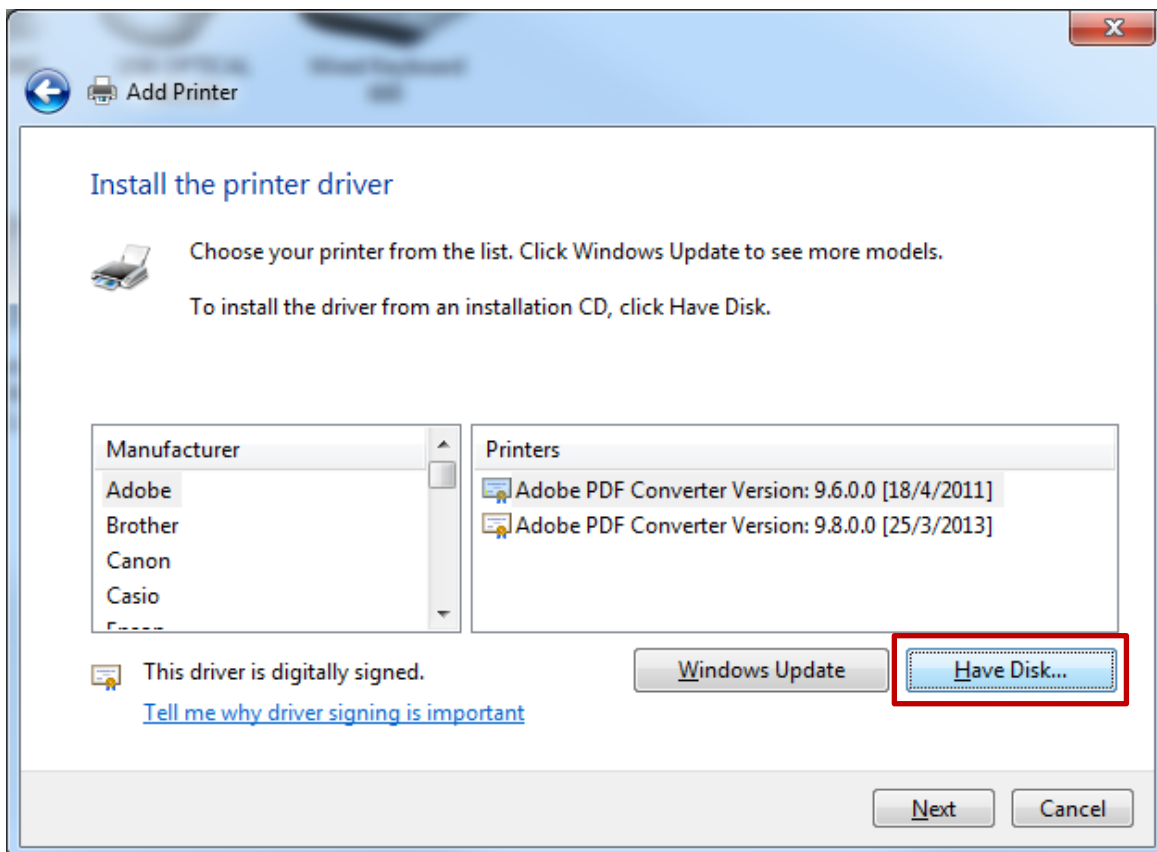
6. Click "Create a new port" and select "Standard TCP/IP Port", click "Next"



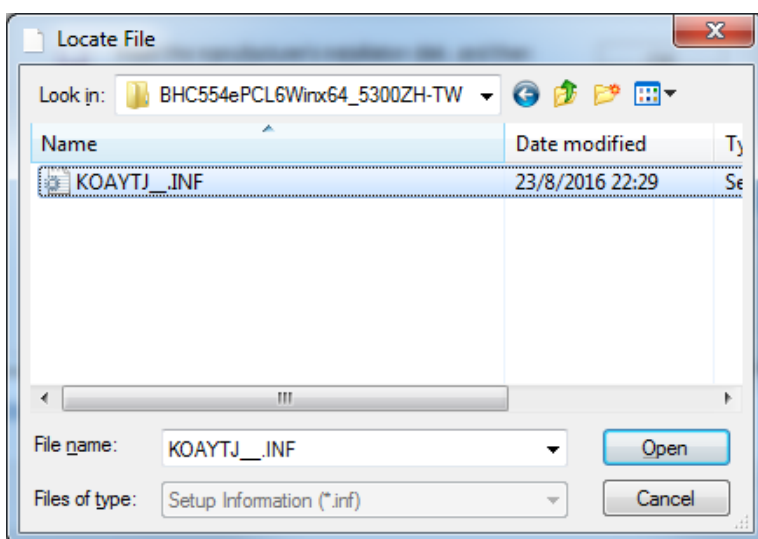
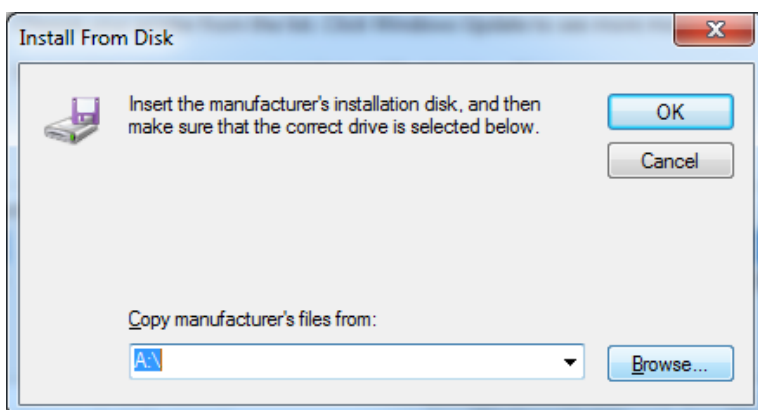
- 7. Enter the network address in "Hostname or IP address", click "Next"



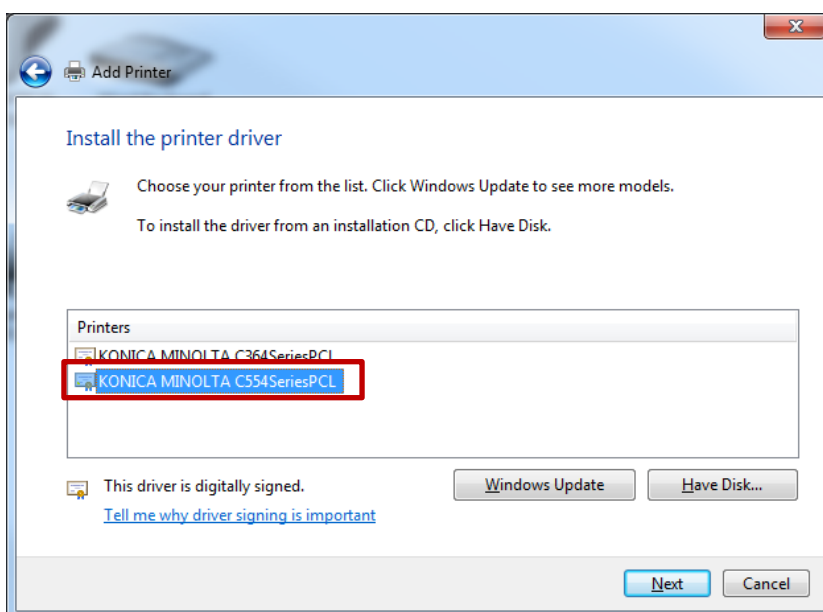
- 8. Click "Have Disk"



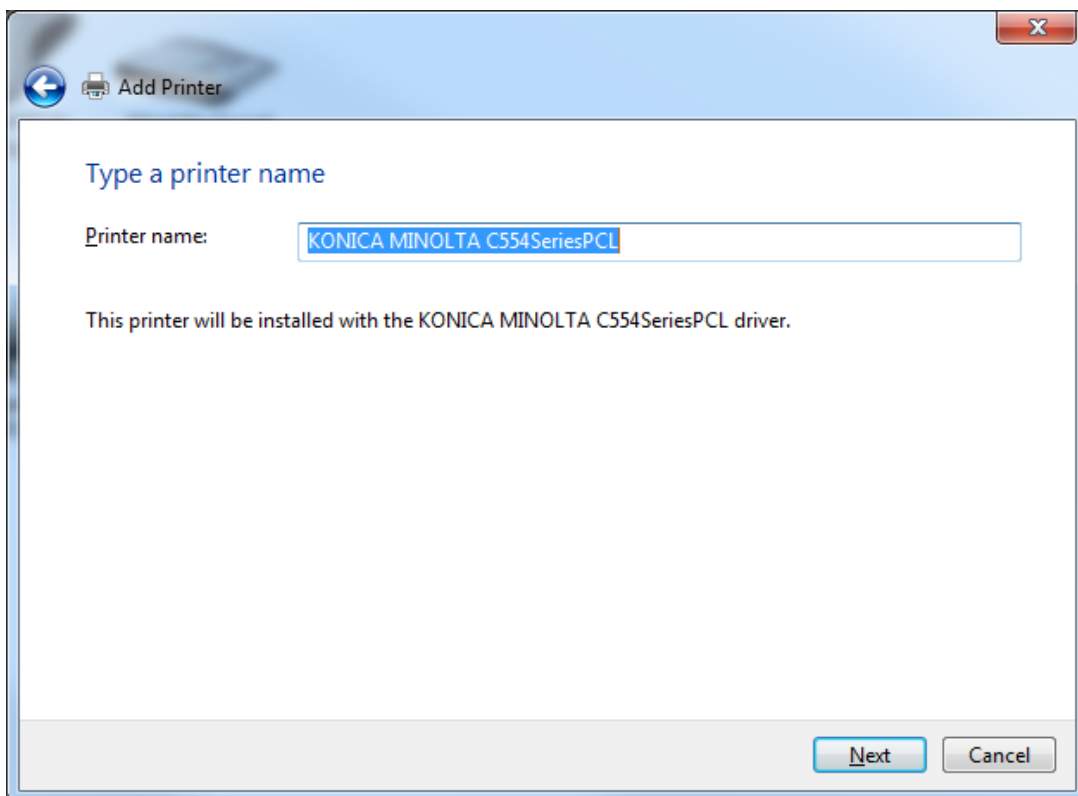
9. Browse your unzipped driver folder and select the driver



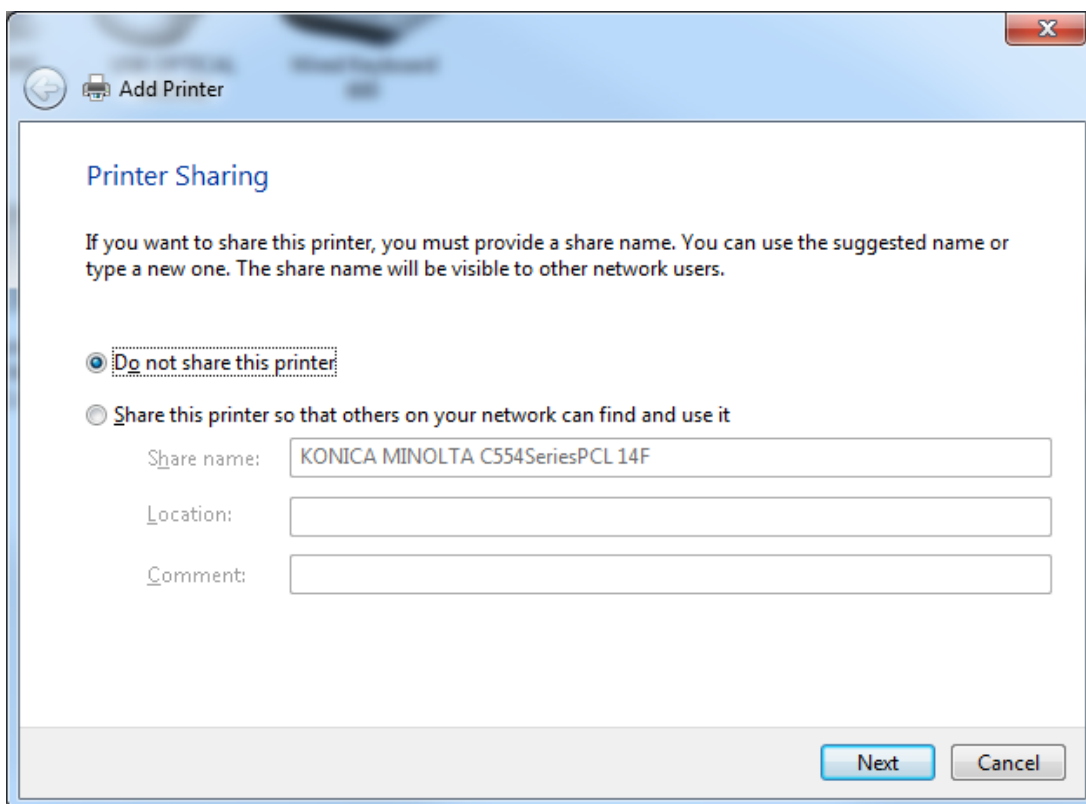
10. Select the printer model, click "Next"
(bizhub 458e: If this mode does not available, please select 658e)
(bizhub 454e: If this mode does not available, please select 554e)



11. Set the printer name, click “Next”



12. Select “Do not share this printer” , click “Next”



13. Click “Finish”

