

Procedure to configure Windows 7 to support Universities via Y5ZONE

1. Click **Wireless Network** icon in the system tray (located at bottom right corner). Select **Universities via Y5ZONE**.



2. Check **Connect automatically** and Click **Connect**.



3. In the Enter Credentials window, enter your username and password. Click **OK**.

A. For Student

Username: **HPSHCC StudentID** in the format of HPSHCCStudentID@hkuspace-plk.hku.hk

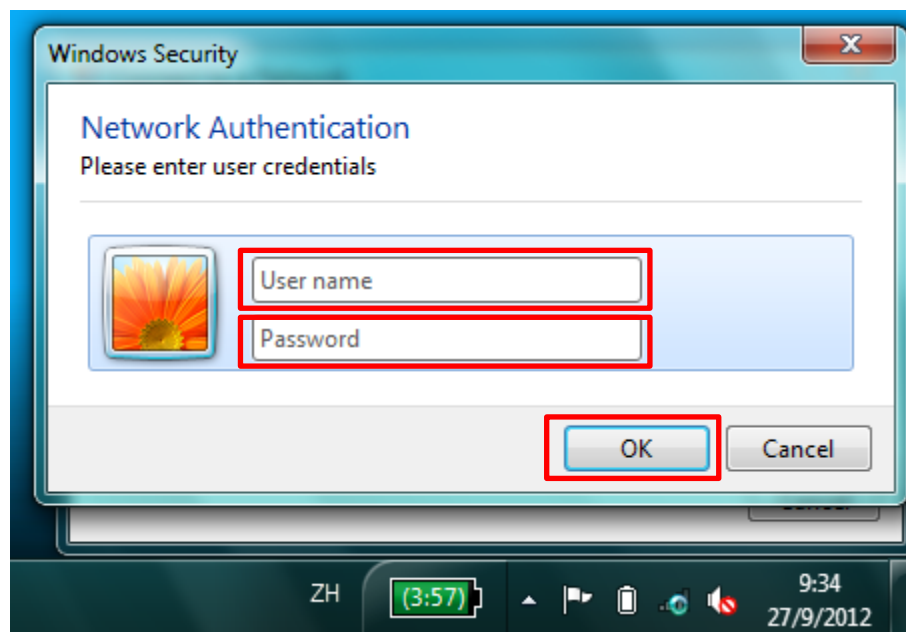
Password: Login password of **cyberstation**

For first time student WiFi user, please login the CyberStation in HPSHCC campus and change password.

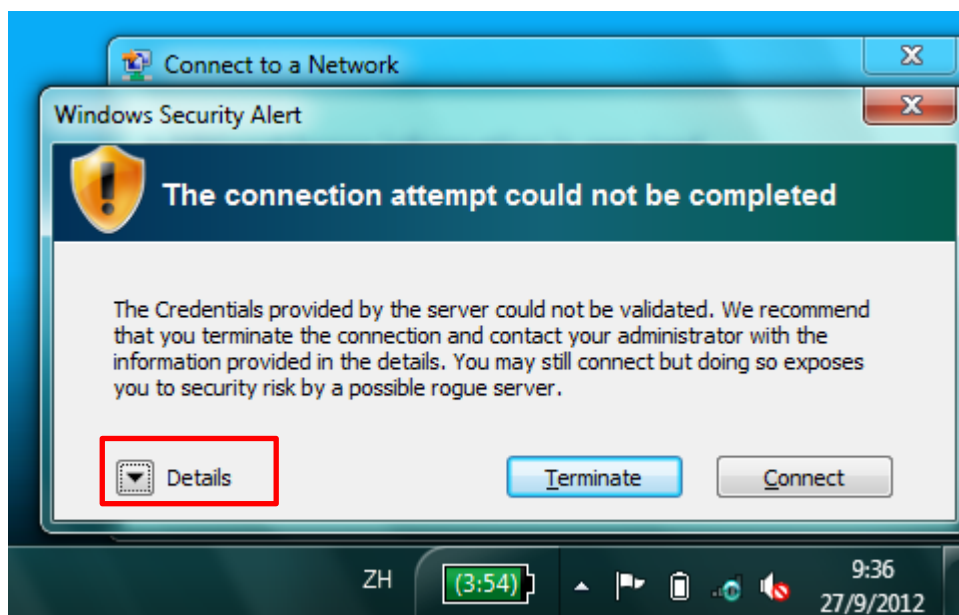
B. For Staff

Username: **Login ID of staff PC** in the format of **LoginIDofStaffPC@hkuspace-plk.hku.hk**

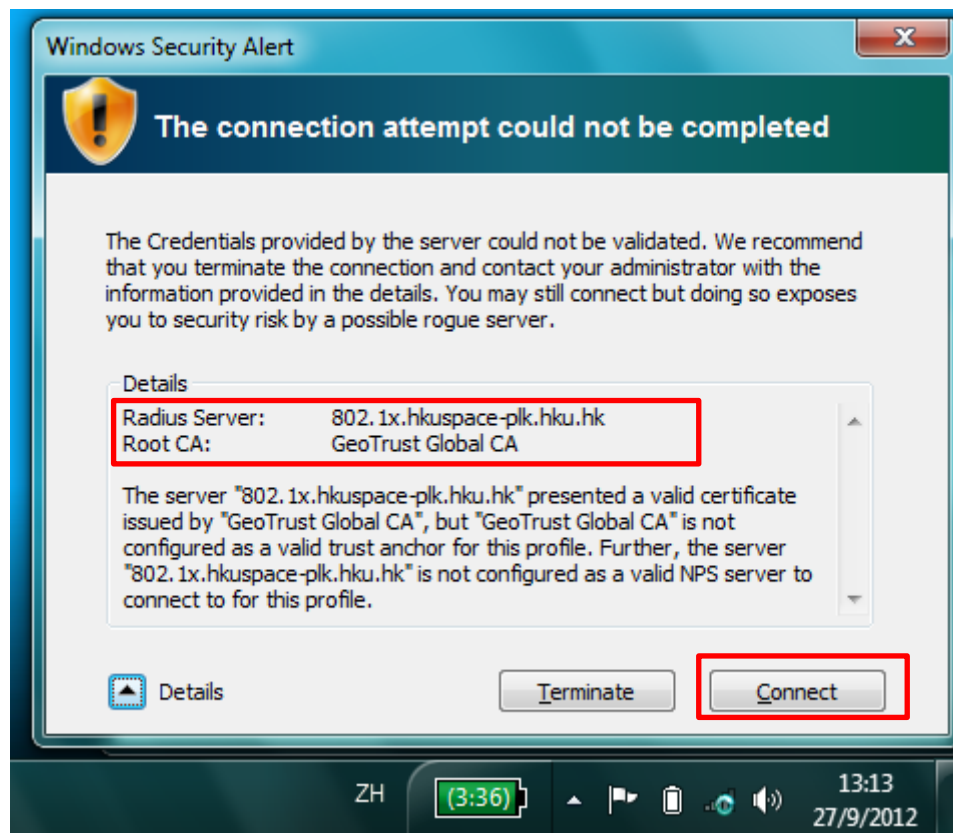
Password: **Staff Intranet Password**



4. When Windows Security Alert pops up, Click **Details**.



5. Make sure Radius Server is **802.1x.hkustspace-plk.hku.hk** and Root CA is **GeoTrust SSL CA**. Click **Connect**.



6. Open the Internet browser, go to <http://www.google.com>.

END